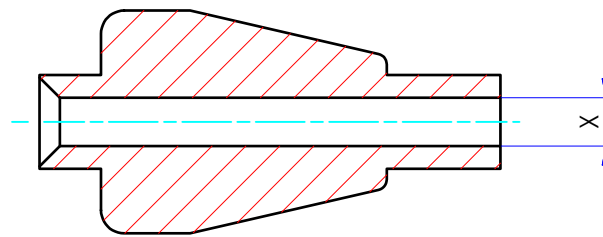


Dimension in mm [Inch]



FUSED SILICA 1/16"	MM DIM ØX	MATERIAL SYMBOL	MATERIAL
FS1	.4 [Ø.0157"]	None	Polyimide, Valcon
	.45 [Ø.0177"]	PK	PEEK
	.5 [Ø.0197"]	KF	CTFE
	.6 [Ø.0236"]	V1	Polyimide, Virgin
	.7 [Ø.0276"]		
	.8 [Ø.0315"]		
	.9 [Ø.0354"]		
	1.0 [Ø.0393"]		
	1.3 [Ø.0512"]		

For example: FS1.8PK
FS11.0PK

PART NUMBER

THIS DOCUMENT AND THE INFORMATION WHICH IT CONTAINS SHALL NOT BE USED, EXPLOITED OR SOLD, AND SHALL NOT BE REVEALED OR DISCLOSED TO OTHERS WITHOUT THE EXPRESS WRITTEN PERMISSION OF VICI. THIS DOCUMENT SHALL REMAIN THE PROPERTY OF VICI AND SHALL BE RETURNED UPON DEMAND.

Material MATERIAL

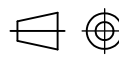
Dimensionen DIMENSIONS

Aenderungen: MODIFICATIONS:

Projektion PROJECTION

Allgemein Toleranzen GENERAL TOLERANCES

PART NO.: FS1.*



SN EN 22768-1/ ISO 2768

Adaptor, fused silica 1/16 Ser's

General dimensions

Masstab SCALE

8:1

Gezeichnet DRAWN

22.01.2010

F.P.

Geprüft / Freigabe CHECKED/ RELEASE

22.01.2010

FCo

CAD Nr. CAD NO.

506357.idw

Unterverz.: SUB DIREC.:

KUNDE

Zeichnungs Nr. / DRAWING NO.

4 - GE - 5063.57



VICI AG International, CH-6214 Schenkon