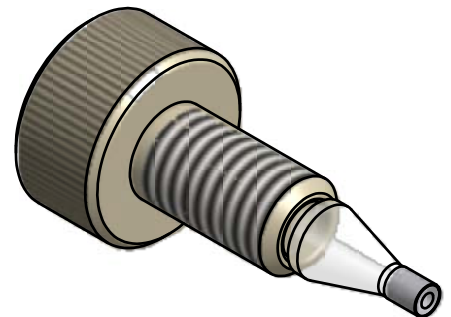
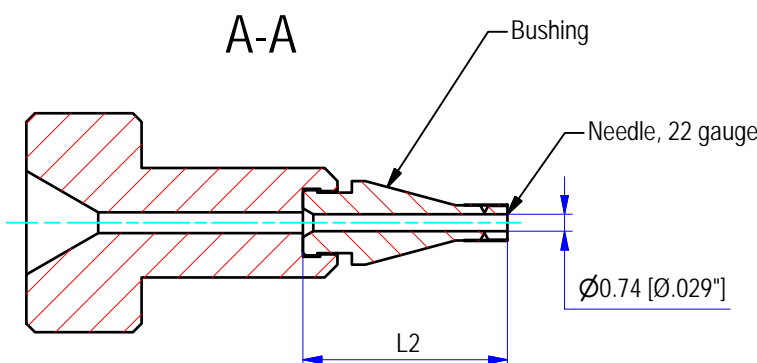


Dimension in mm [Inch]



SHOWN ZVISF-1PFA

Part#	Description	L1	L2
ZVISF-1PFAH	Fillport with PFA bushing, high pressure	~22.5 [~.88"]	10.3 [.407"]
ZVISF-1PEH	Fillport with high density PE bushing, high pressure	~22.5 [~.88"]	10.3 [.407"]
ZVISF-1PFA	Fillport with PFA bushing, low pressure	~21 [~.83"]	9 [.355"]
ZVISF-1PE	Fillport with high density PE bushing, low pressure	~21 [~.83"]	9 [.355"]
ZVISF-1KF	Fillport with CTFE bushing, low pressure	~21 [~.83"]	9 [.355"]
ZVISF-1PK	Fillport with PEEK bushing, low pressure	~21 [~.83"]	9 [.355"]

THIS DOCUMENT AND THE INFORMATION WHICH IT CONTAINS SHALL NOT BE USED, EXPLOITED OR SOLD, AND SHALL NOT BE REVEALED OR DISCLOSED TO OTHERS WITHOUT THE EXPRESS WRITTEN PERMISSION OF VICI. THIS DOCUMENT SHALL REMAIN THE PROPERTY OF VICI AND SHALL BE RETURNED UPON DEMAND.

Material  
MATERIAL

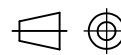
Dimensionen  
DIMENSIONS

Aenderungen:  
MODIFICATIONS:

Projektion  
PROJECTION

Allgemein Toleranzen  
GENERAL TOLERANCES

PART NO.:  
ZVISF-1P\*



SN EN 22768-1/ ISO 2768

# Zero dead volume fill ports ZDV for 1/16"

General dimensions

Masstab  
SCALE

3:1

Gezeichnet  
DRAWN

08.04.2010

F.P.

Geprüft / Freigabe  
CHECKED/ RELEASE

08.04.2010

FCo

CAD Nr.  
CAD NO.

506369.idw

Unterverz.:  
SUB DIREC.:

KUNDE

Zeichnungs Nr. / DRAWING NO.

4 - GE - 5063.69

VICI®

VICI AG International, CH-6214 Schenkon